

# River regulation of Drava- Mura River's mouth

## Drava River Vision

**Ladislav GRĐAN**

Msc. Water building engineer

Expert of HCWMC

Hrvatske vode

Croatia - Varaždin



**Alajos BURIAN**

Msc. Water building engineer

South-Transdanubian Environment

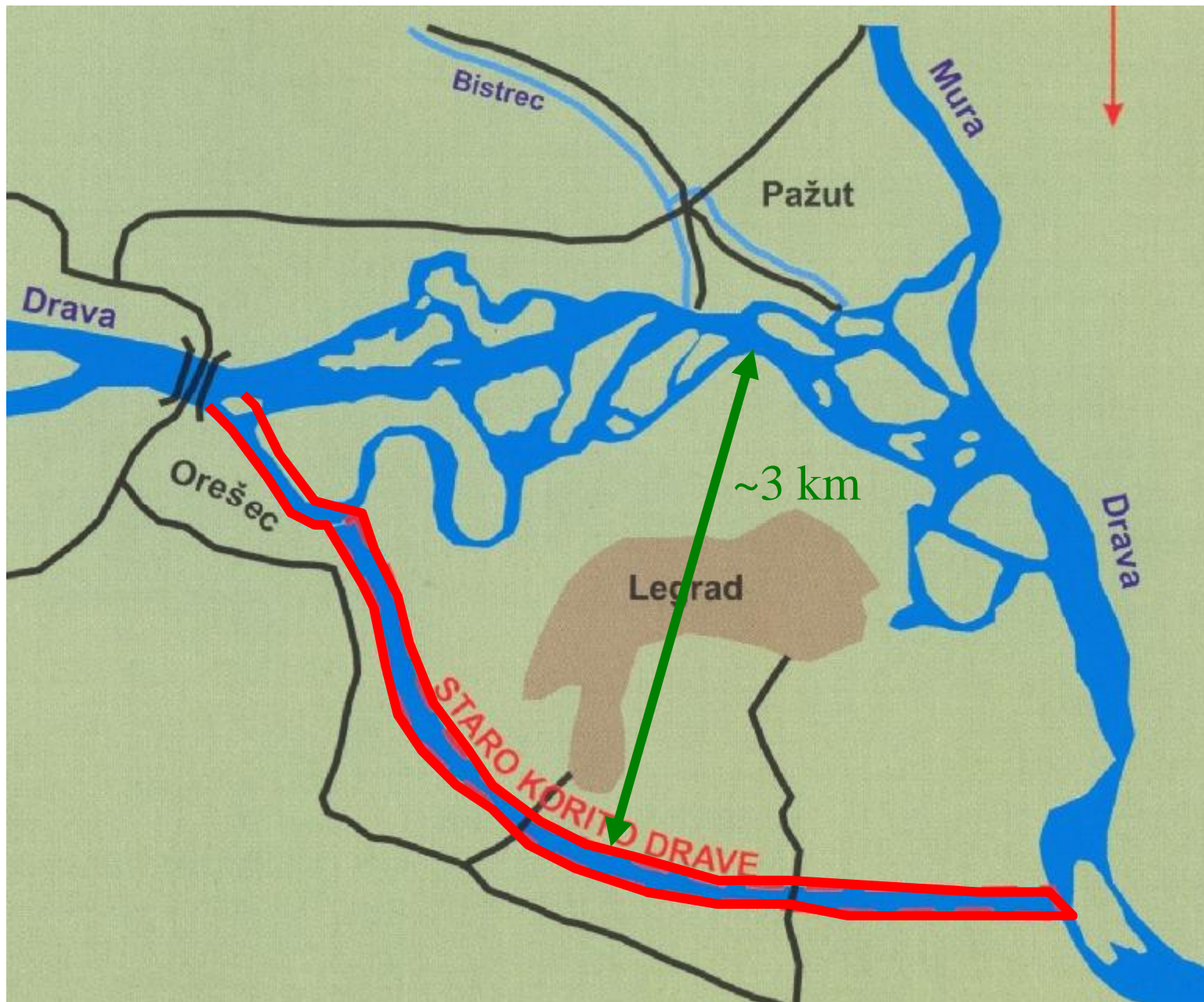
Protection and Water Management

Directorate

Hungary - Pécs



**24. september 2008 Maribor**



main  
watercourse  
before 1710

A view  
from  
Google  
Earth





## Mouth's area

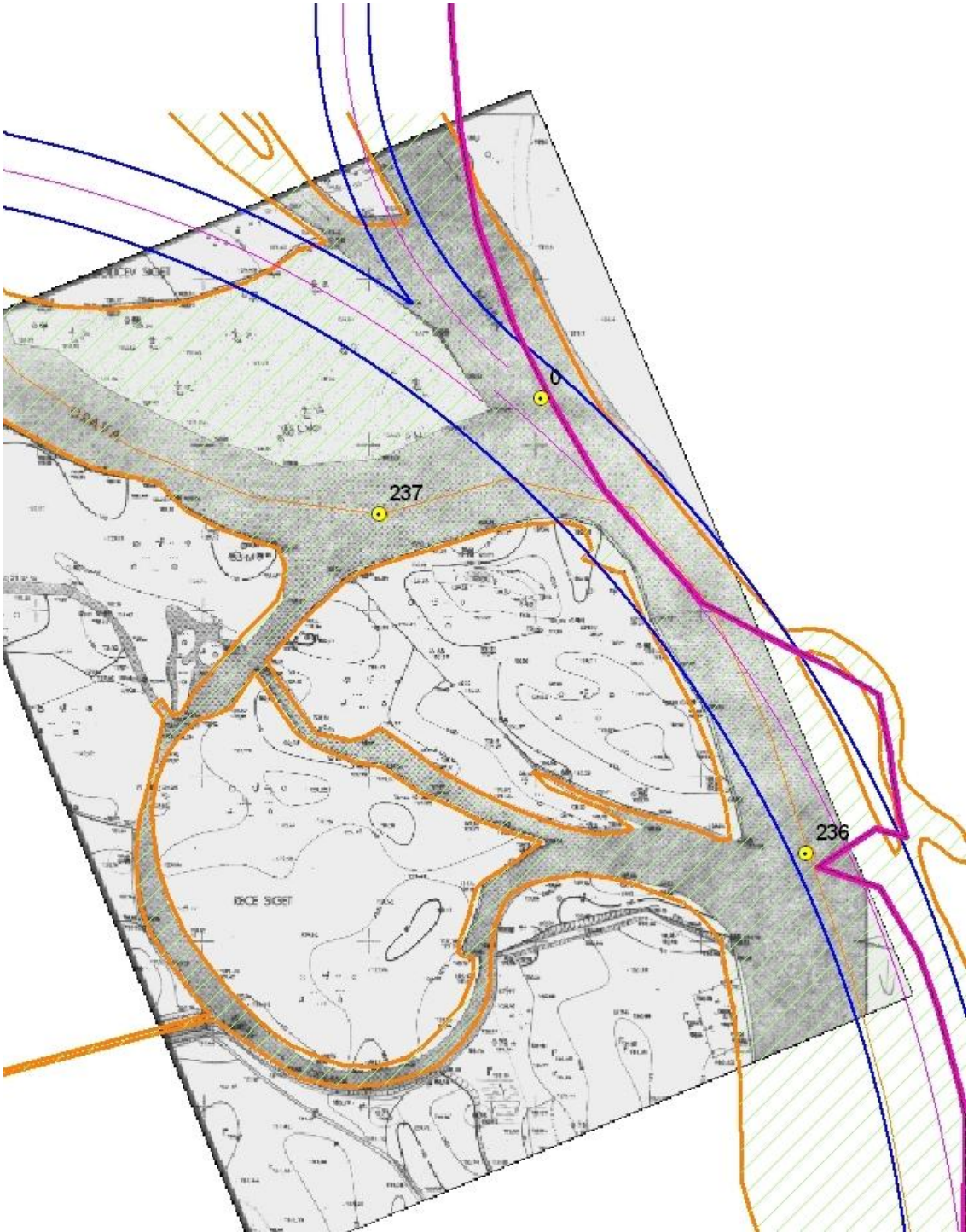
-map from 2000

-position of km tables

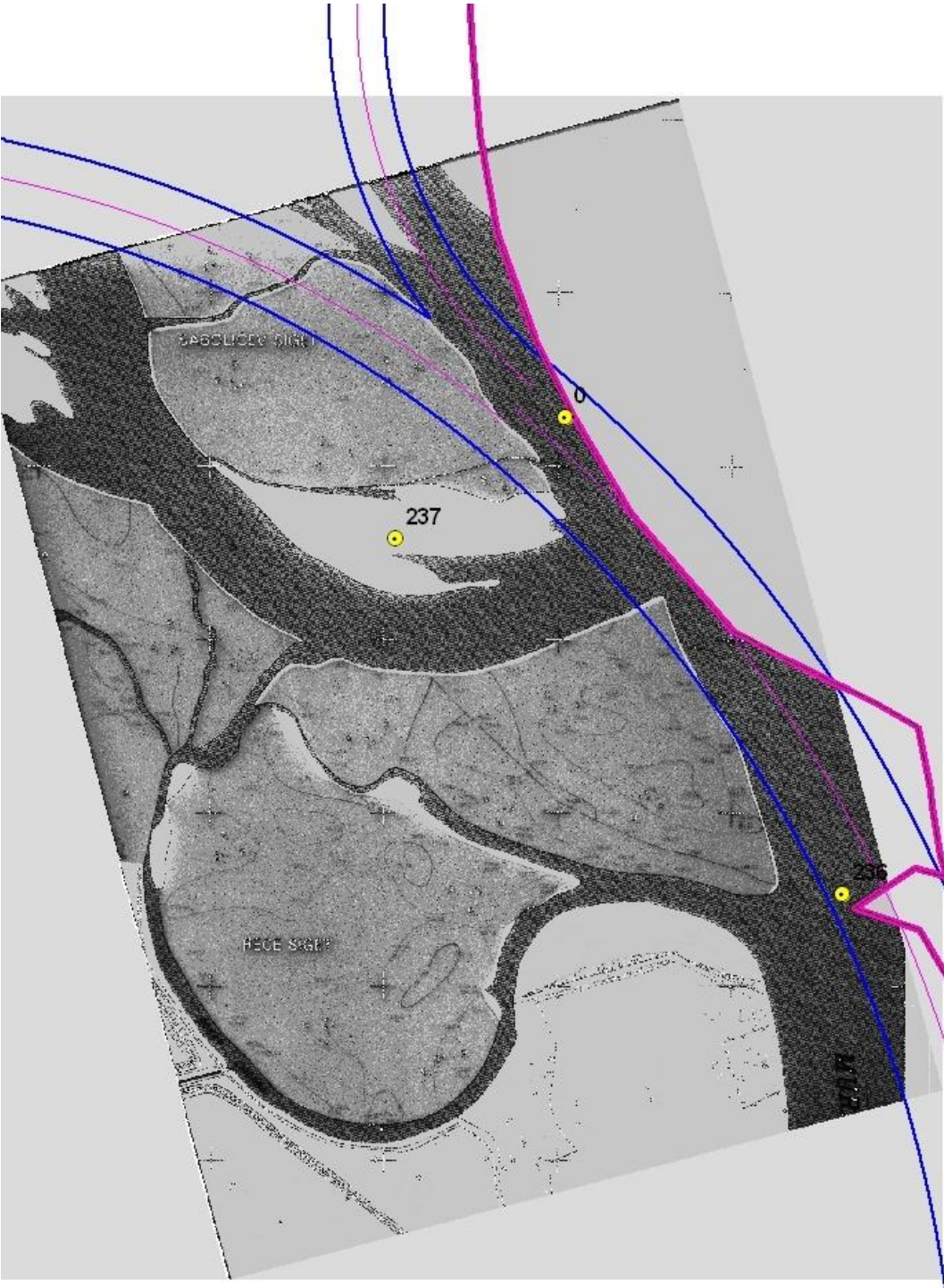
-regulation line

-state border

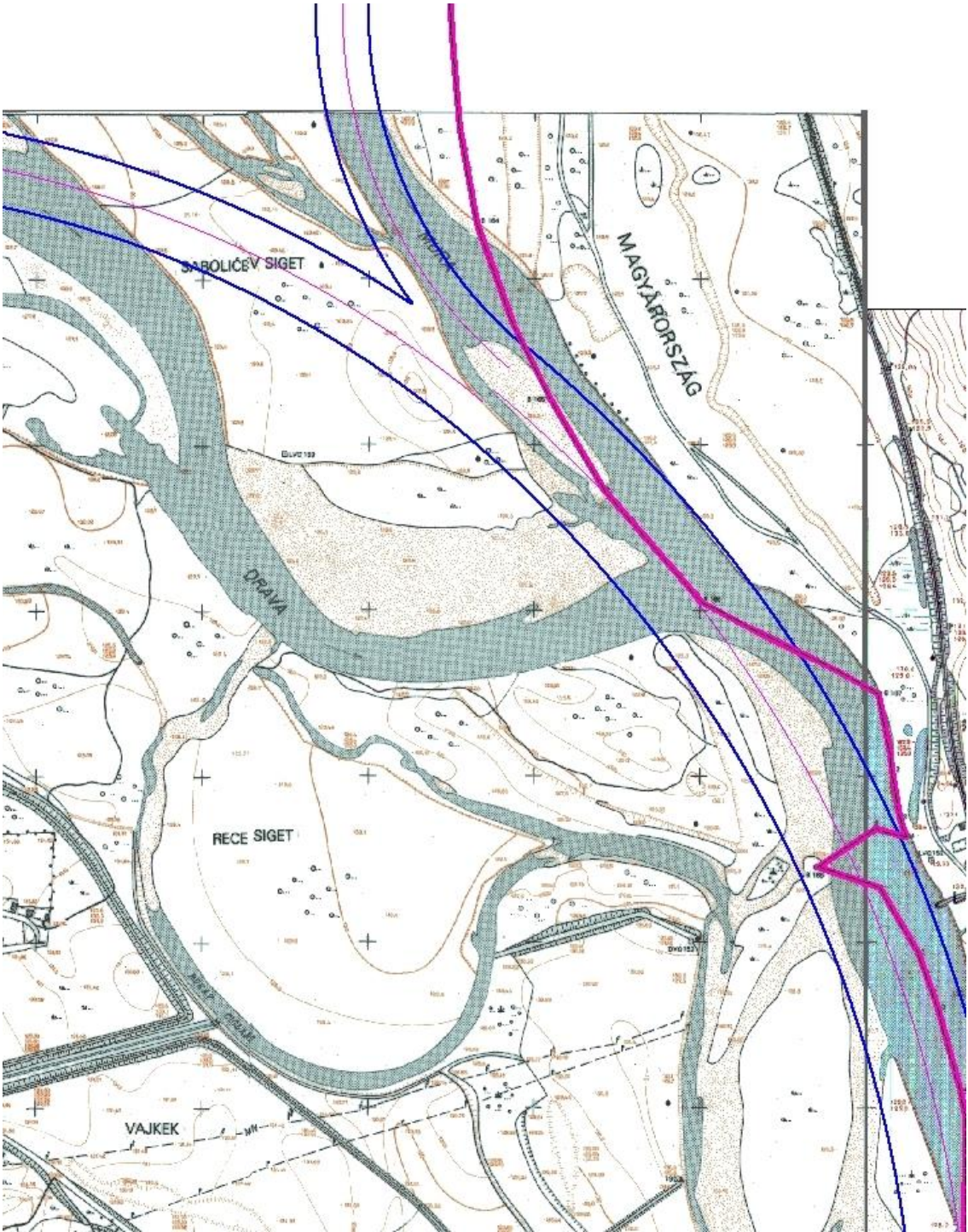
Year 1968



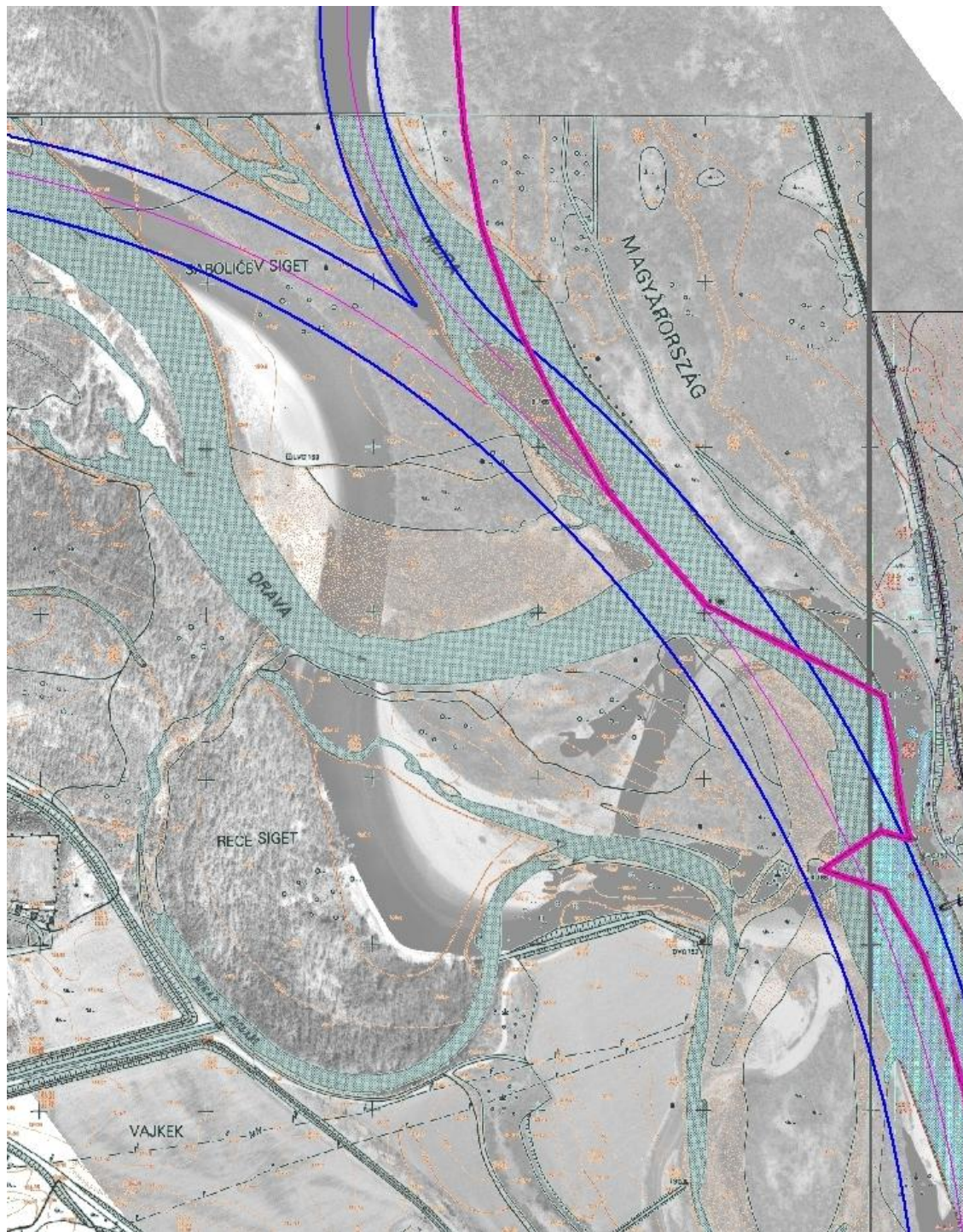
Year 1980



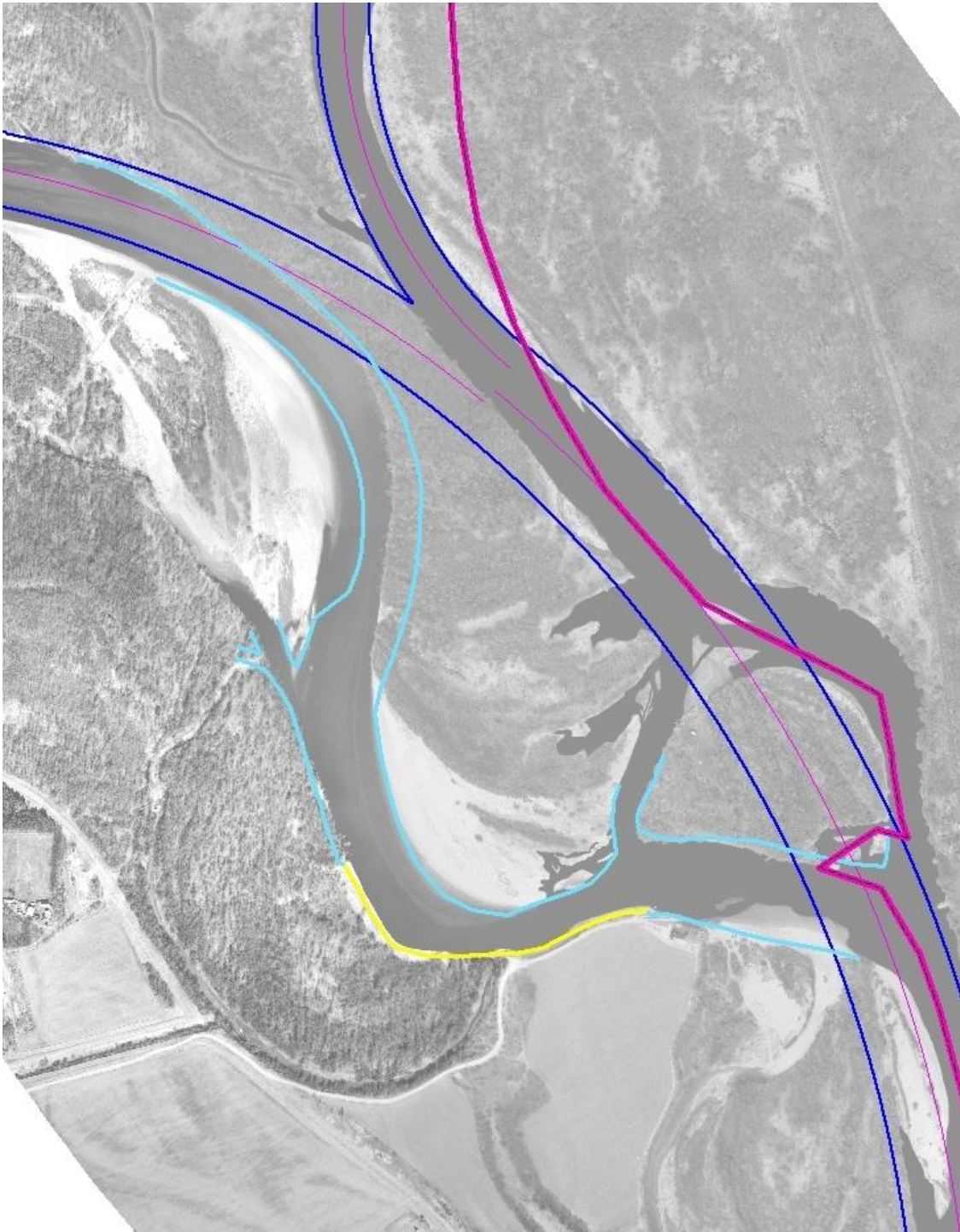
Year 1988



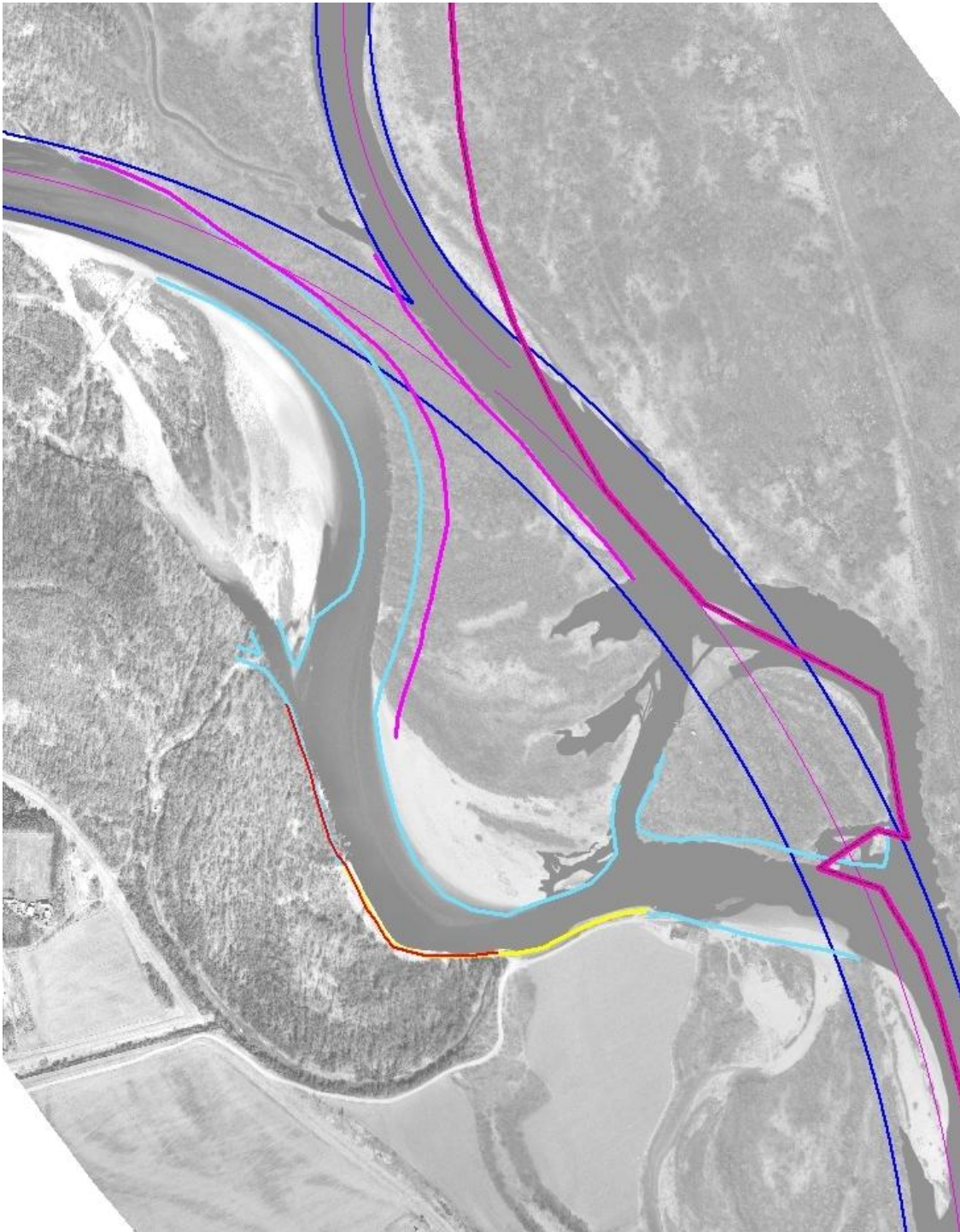
Year 2000



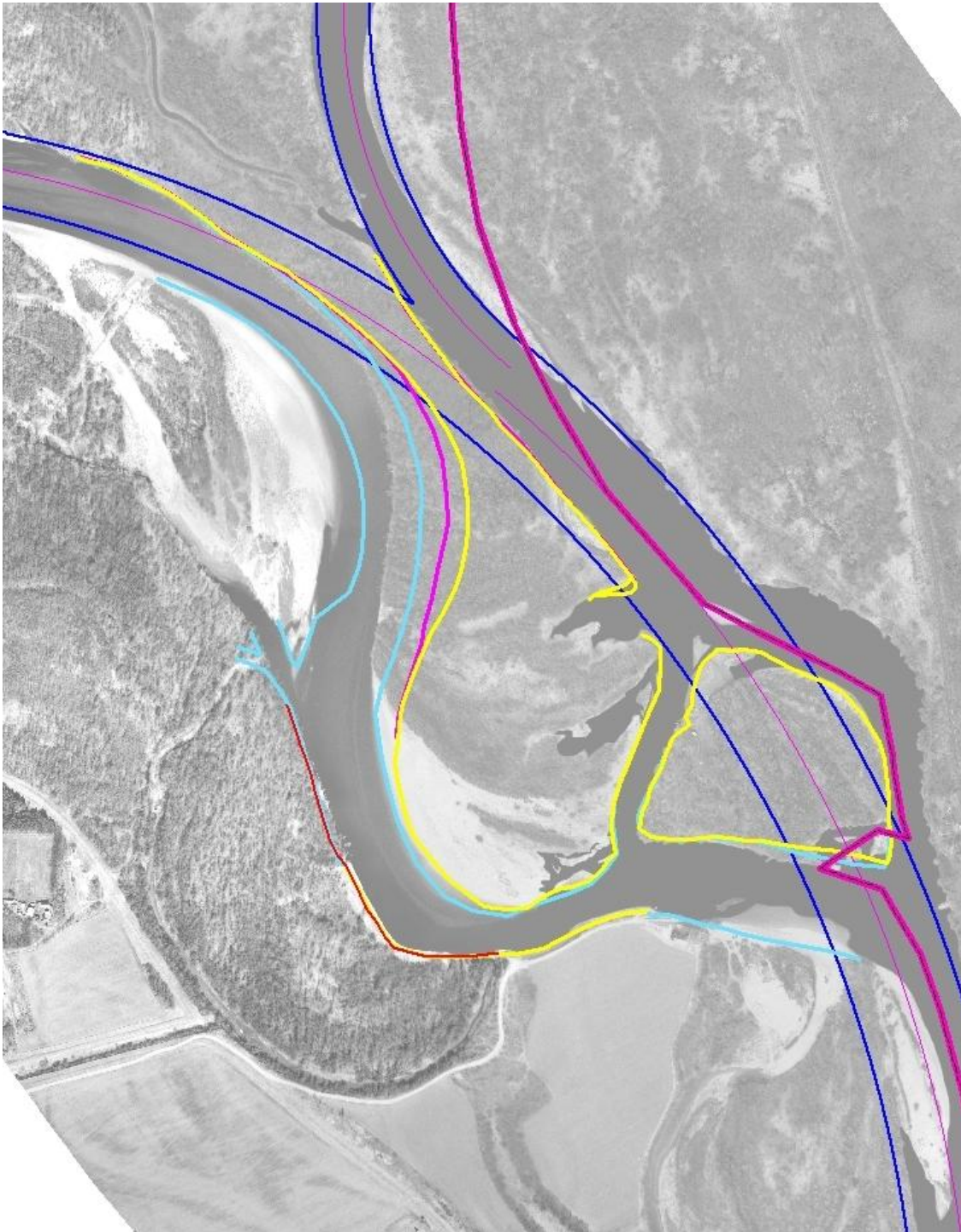
Year 2001



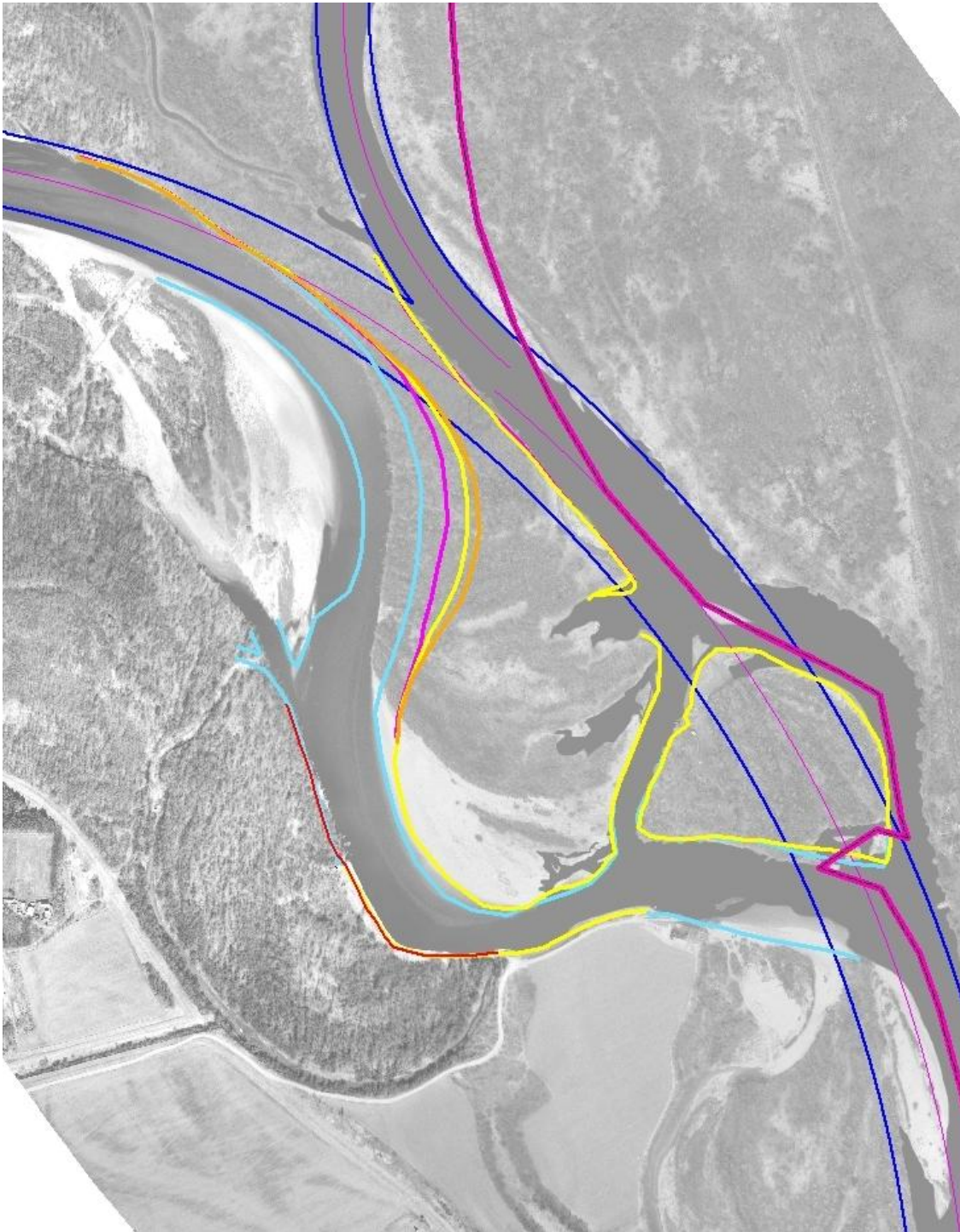
Year 2005



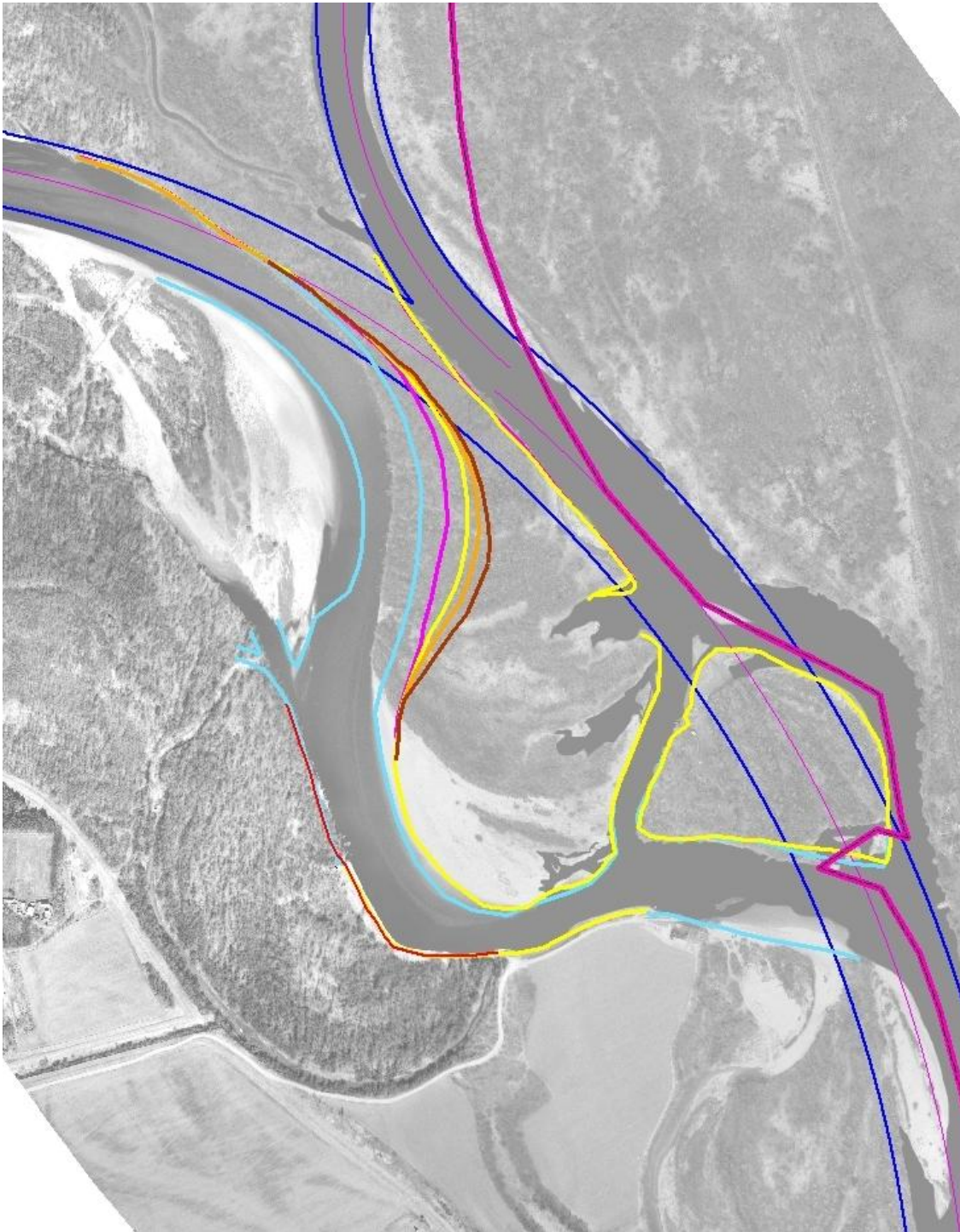
Year 2006



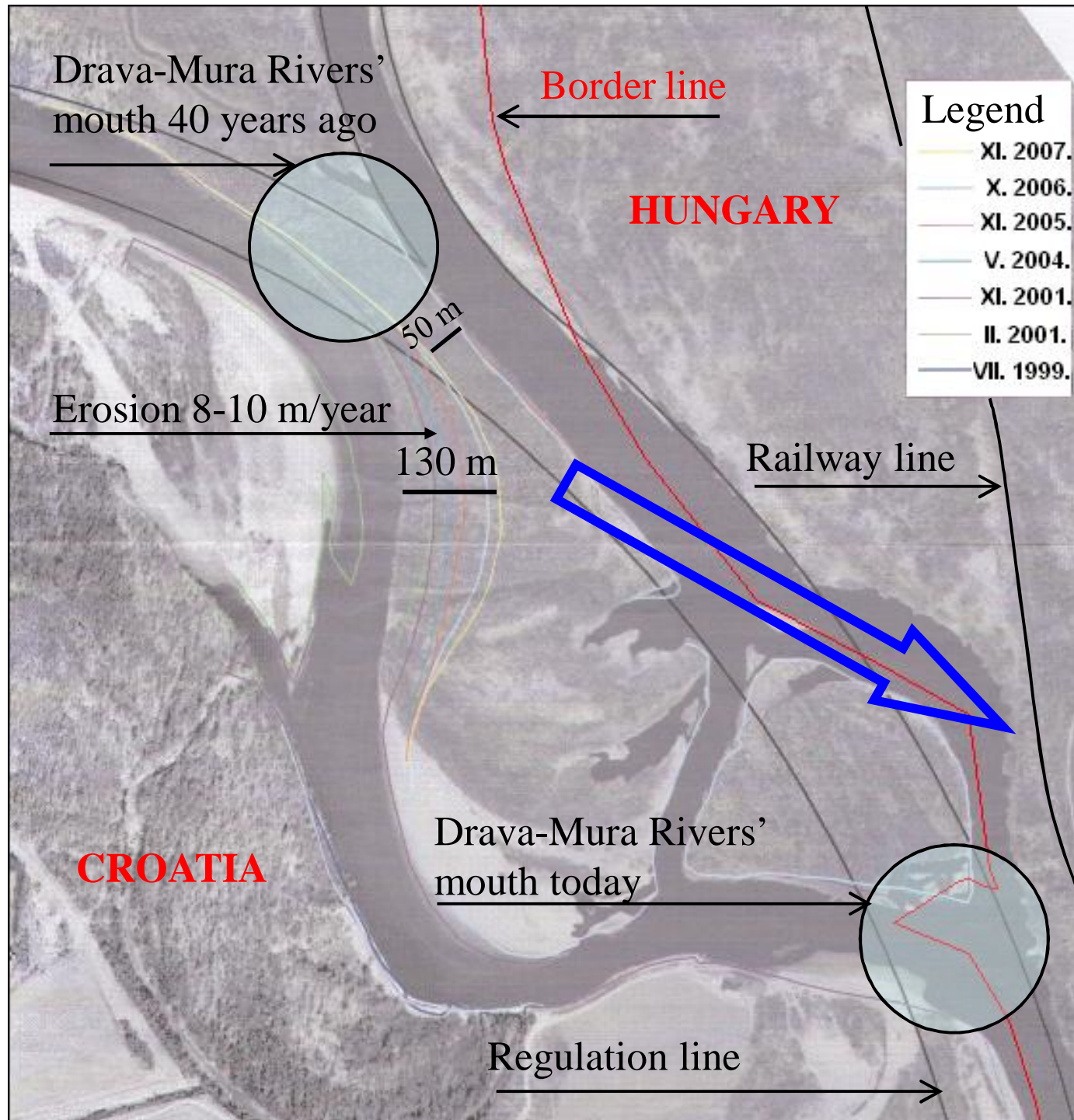
Year 2007

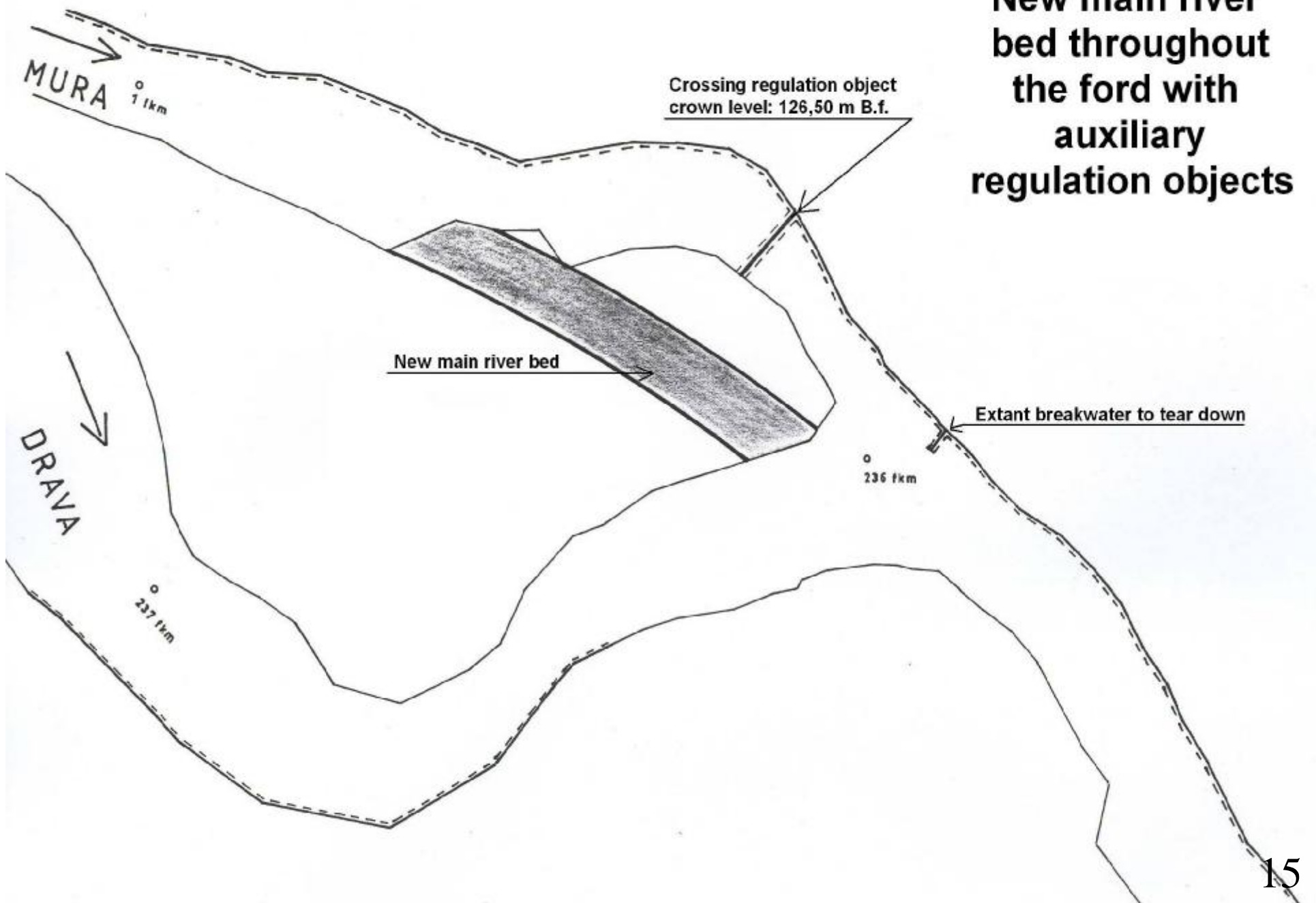


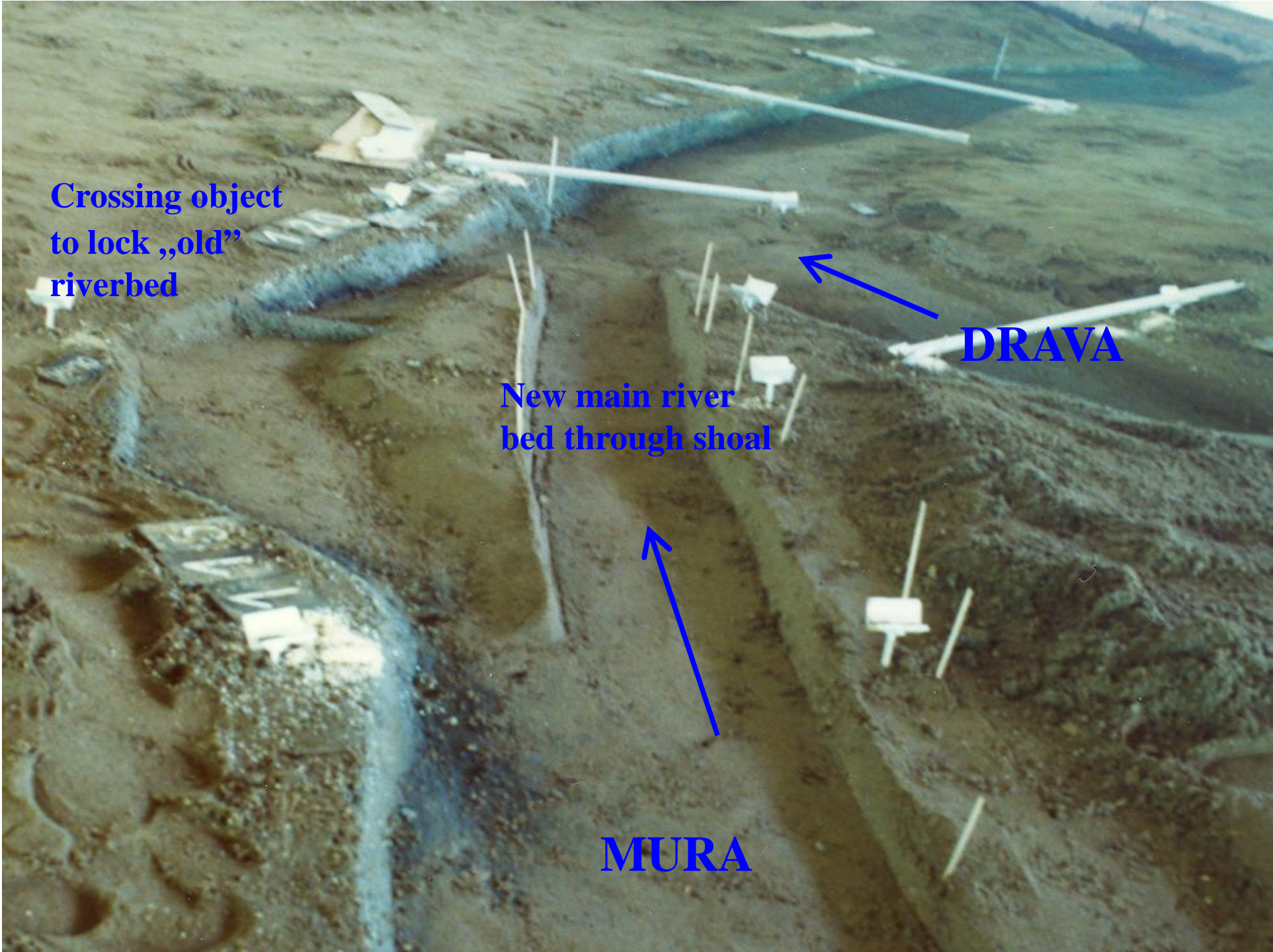
Year 2008



# The situation today







Crossing object  
to lock „old”  
riverbed

New main river  
bed through shoal

DRAVA

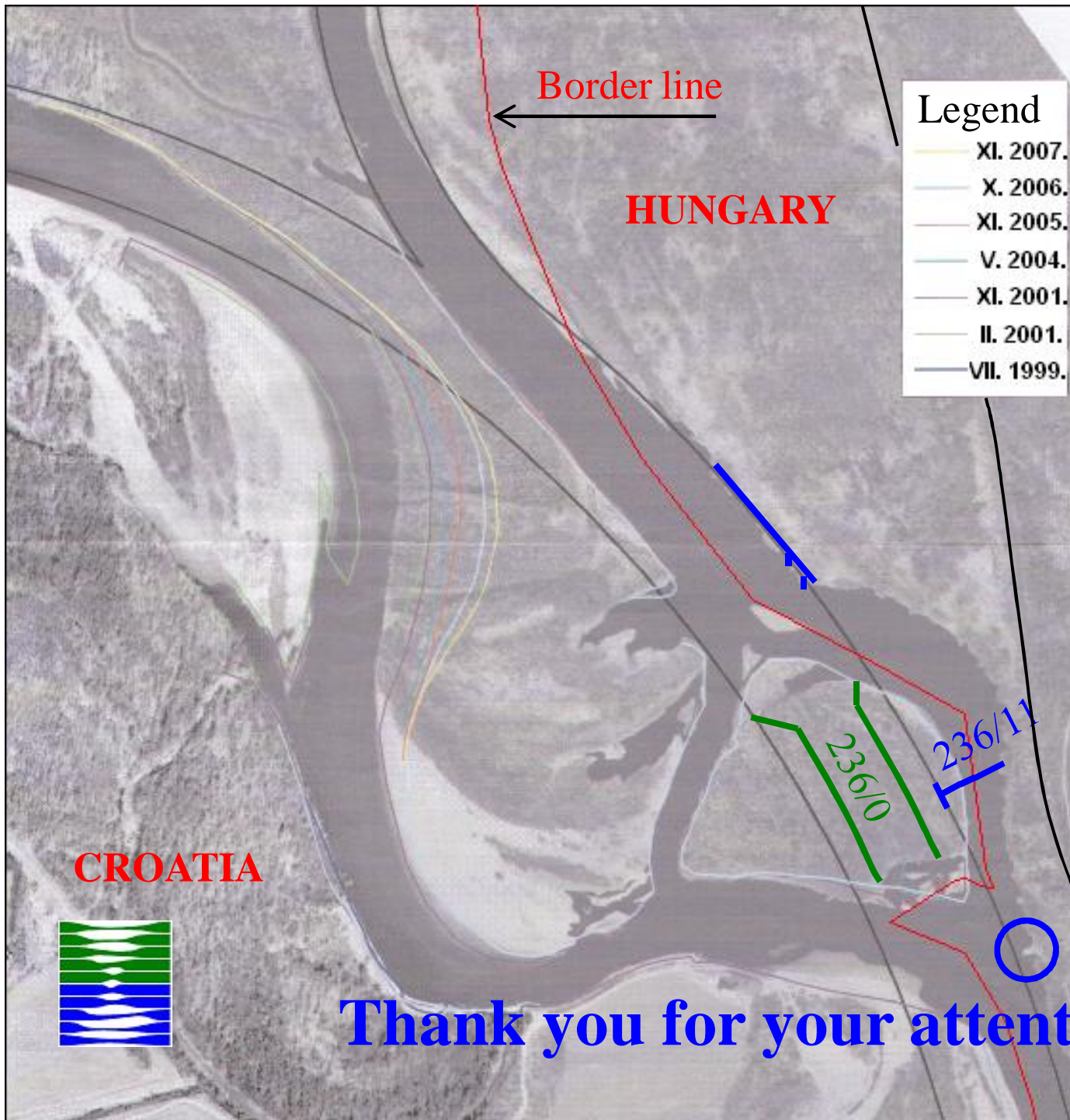
MURA

Mura 136 m<sup>3</sup>/s

## Modelling of the new main riverbed in Mura with crossing-lock object in branch of river tree



Dráva  
271 m<sup>3</sup>/s



# Planned regulation objects

- Crossing object
- New river bed across the shoal
- Bank protection
- Spur dike